



ASPRS - Potomac Region
5410 Grosvenor Lane
Suite 210
Bethesda, MD 20814-2160

ASPRS Potomac Region

The imaging and geospatial information society
Spring 2009 Newsletter



In This Issue:

Election Results
 ASPRS Conference
Signup for USDA / NASS Tour
 Technical Note by Dr. Y. Wang "North Carolina Shoreline Changes"
 2013 Conference call for volunteers
 Membership Statistics

ASPRS Annual Conference in Baltimore Maryland March 9-13

The Potomac Region (PR) hosted the ASPRS Baltimore Conference in which the ASPRS celebrated its 75th Anniversary. Dr. John Townshend (Univ. of Maryland) gave the conference keynote address in which he discussed the necessity of remote sensing data and analysis for global understanding. He described the Global Land Cover Facility that provides downloads of Landsat, MODIS, and ASTER scenes. Incoming ASPRS president Dr. Bradley Doorn gave an overview of his vision for the future of ASPRS, followed by Anne Migliarese who provided a summary of activities by the National Geospatial Advisory Council, an organization that provides inputs to the government on matters of interest to the geospatial community.

The PR also hosted the conference reception which also included a number of distinguished ISPRS members, notably current ISPRS president Orhan Altan and past presidents John Trinder and Gottfried Konecny.

Election Results from January 2009 Regional Election

Two vacancies were filled in January when Dr. Christopher Parrish was voted into the position of Secretary/Treasurer and Dr. Anthony Stefanidis was voted in as Region Director. Dr. Parrish is a Physical Scientist at NOAA's National Geodetic Center. Dr. Stefanidis is an Associate Professor in the Department of Geography and Geoinformation Science, George Mason University. Many thanks to these two volunteers, as well as to the runners-up, Dr. Steven Payton, Senior Scientist, SAIC, and Dr. Genong (Eugene) Yu, Research Professor, Center for Spatial Information Sciences & Systems, George Mason University, for their contributions to ASPRS, their active participation in the region and for their many contributions.



Potomac Region (PR) Left to right Kusum Singh, Barbara Eckstein (Current PR

President)
 Connie Pettinger,
 Yogendra Singh
 (PR Historian),
 Allan Falconer
 (PR Nat Director),
 Larry Pettinger,
 Jennifer Maloney,
 David Szymanski (PR
 Past President),
 John Manzer
 (Region Director,
 2007-2009).



Do you have news to share with the Potomac Region on upcoming events? Would you like to host a tour of your Geospatial workplace? Any ideas for an appropriate outing for your fellow ASPRS members? Do you have a short technical note of interest to the region? We'd love to hear your ideas and we share your work interest. Visit the website and send us a email.

For board meeting agendas, minutes, news, events and contact information, visit the Potomac Region Website: <http://www.asprspotomac.org/>

2009 Potomac Region Officers:

President Barbara Eckstein, Ph.D. McClendon, LLC
Past-President David Szymanski, Ph.D. Booz Allen Hamilton Inc
Vice-President Peter J. Doucette, Ph.D., ITT Corp.
Secretary/Treasurer Christopher E. Parrish, Ph.D. NGS, Remote Sensing Div., NOAA
Historian Yogendra Singh, CP, PLS
National Director Allan Falconer, Ph.D., Associate Dean, College of Science, George Mason University
NC Chapter President, Johan Wilson, Richard Crouse & Associates Inc.
Technical Program Chair, James Chris McGlone, Ph.D., CP, SAIC
Communications Chair, Charlene Sailer, Ph.D., NGA

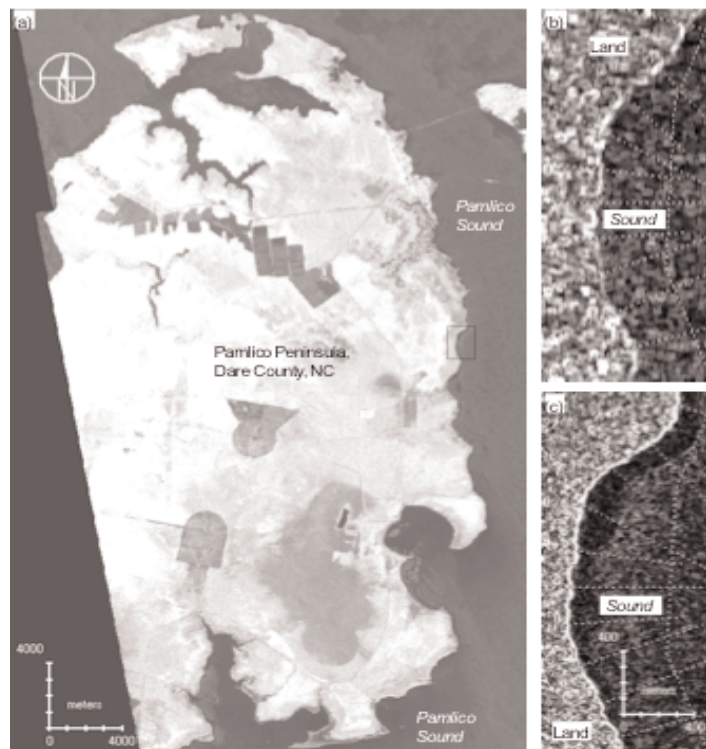
Region Directors:

John Manzer, GeoEye, Inc.
 Yong Wang, Ph.D. East Carolina University
 Anthony Stefanidis, Ph. D., Professor, Dept. of Geography & Geoinformation Science
 George Mason University

“Initial Observations of NC Shoreline Changes Using Japanese ALOS PAL-SAR and JERS-1 SAR data” by Dr. Yong Wang

Dept. of Geography, East Carolina University, Greenville, NC wangy@ecu.edu, tel. (252) 328-1043 and fax, (252) 328-6054

On coastal plains and shores, rapid population growth, additional net influx of human migration, development, competing demands for resources, and natural and man-made disasters threaten communities. “Climate Change 2007” (<http://www.ipcc.ch/>) highlighted the potential impacts and options needed to adapt and mitigate human activities in light of global climate change and rise of sea level. The value of the coastal zone for fisheries, recreation, housing, coastal ecosystem integrity, water quality, and storm damage protection is extremely high. Some coastal areas are eroded faster than they can be restored. Shore erosion especially estuarine shores varies greatly from location to location, yet extensive shorelines such as found in major US estuaries are not readily available or very difficult to map and monitor routinely. Satellite remote sensing can assist in understanding and estimating the erosion rate of coastal lines. SAR data acquired by the Japanese Aerospace Exploration Agency (JAXA) was used to delineate shorelines of Pamlico Peninsula, Dare County, NC and to estimate their changes through time. Between 1994 and 2006, there were no noticeable erosion on the north and south sides. However, on the east side, erosion was measurable, and varied from several meters to near twelve meters per year. An area outlined by the rectangle was extracted with an average erosion rate of 10.4 m/year +/- standard deviation of 3.1 m/year, measured along ten transects referenced



(a) 2006 L-HH PALSAR data of Pamlico Peninsula. Shorelines delineated at the time of the data. (b) 1994 JERS-1 SAR data of the same area. (c) 2006 PALSAR data of the same area. White curved lines were shorelines, and dotted lines transects and baselines.

to the same baseline. The results support the applicability and reliability in the use of spaceborne SAR datasets in coastal studies, and the potential for the methodology/database developments to identify and address critical issues and problems in coastal communities and environments in the response of the rapid population growth, change of land use and land cover type, natural hazards, sea level rise, and global climate change.

Technical Tour of National Agricultural Statistics Service/United States Dept. of Agriculture

The next ASPRS-Potomac Region Tech Tour will be held on Wednesday, May 13th, 2009, at 1:00 PM, at the U.S. Department of Agriculture in Fairfax, Virginia. We will visit two remote sensing units; the Spatial Analysis Research and the Area Sampling Frame Sections of the Research and Development Division, USDA/National Agricultural Statistics Service (NASS). The NASS remote sensing program, established nearly 35 years ago, is a world leader for large scale operational crop acreage and yield estimation and area sampling frame construction. You will see a variety of research and production activities conducted at NASS, including the remote sensing based Cropland Data Layer acreage and crop yield estimation programs, Area Sampling Frame construction and GIS thematic mapping applications. Please register via the ASPRS-PR website (<http://www.asprspotomac.org/>) as soon as possible. If you have any questions, please contact Dr Anthony Stefanidis (703-993 9237, astefani@gmu.edu) or Dr Barbara Eckstein (703-440-0105, BEckstein@surfbest.net)

Where: USDA/NASS When: 13 May, 2009 1:00 - 4:00 P
3251 Old Lee Highway, Fairfax, VA 22030, 4th Floor (703-877-8000)

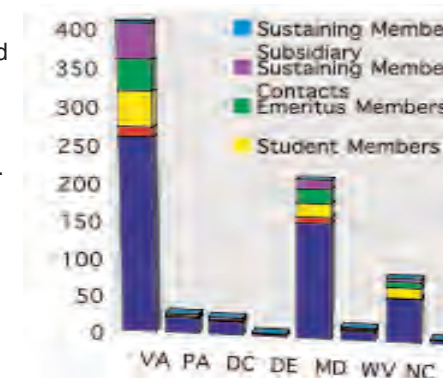
http://www.nass.usda.gov/Research_and_Science/

- Agenda: 1:00 PM ~ 1:30 Area Sampling Frame construction
- 1:30 PM ~ 2:00 GIS applications
- 2:00 PM ~ 2:30 Cropland Data Layer program
- 2:30 PM ~ 2:50 Acreage estimation
- 3:00 PM ~ 3:30 Crop yield estimation
- 3:35 PM ~ 4:00 3rd Floor Tour

After-Tour Social Event: Please join your colleagues for some fun, food, and conversation (not necessarily technical), after the USDA/NASS tour, at nearby Fast Eddie's 9867 Fairfax Blvd, Fairfax, VA For more information about the venue, see <http://www.fasteddies.com/>

Volunteers needed to Plan Proposed 2013 ASPRS Spring Conference in Potomac Region

The Potomac Region has submitted a Letter of Intent to host the 2013 ASPRS Spring Conference. We are beginning to plan the logistics and seek volunteers to serve on the planning committee. We also need to select a conference venue, theme, and social program. Please contact Dave Szymanski with questions and your input (Dave_Szymanski@alum.rit.edu).



Potomac Region Membership

The Potomac Region has 802 members as of 28 March, with 153 new members since 1 January 2008. The ratio of male to female members remains approx 5:1.

ASPRS-PR was “Region of the Month” 6 times in 2008 (January, May, June, September, October, and November), and twice (so far) in 2009, in January and February.